

An aerial photograph of a wind farm and an industrial facility, likely a refinery or chemical plant. The scene is dominated by green fields and a clear sky. In the foreground, a large white line graphic, resembling a stylized mountain or a wave, frames the central text. The background shows a dense cluster of wind turbines stretching across the horizon. The industrial facility features several large storage tanks, buildings, and a complex network of pipes and structures.

EXPERT SESSION

New energy systems – new value chains

By Niels Duedahl, CEO, Norlys a.m.b.a



NORLYS

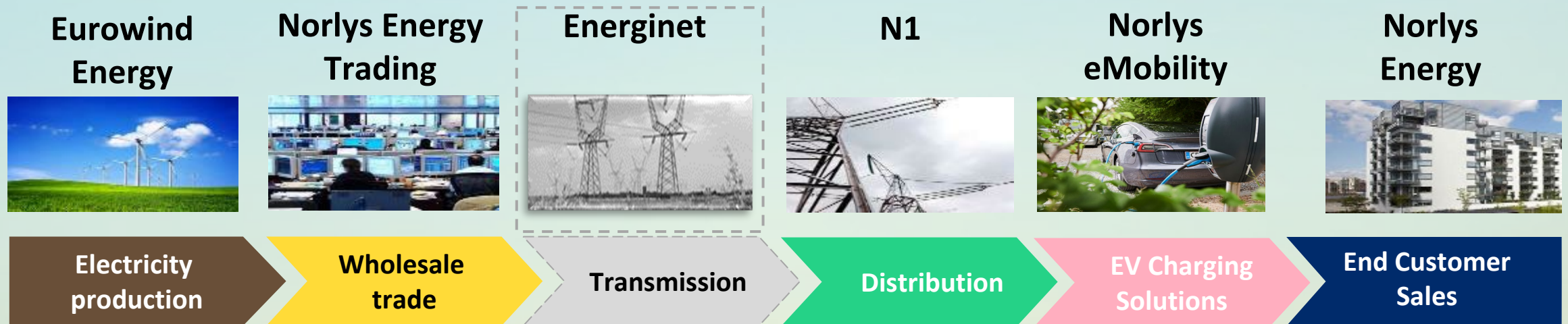
GreenLab Summit

New energy systems – new value chains

Niels Duedahl
CEO, Norlys

8 November 2023

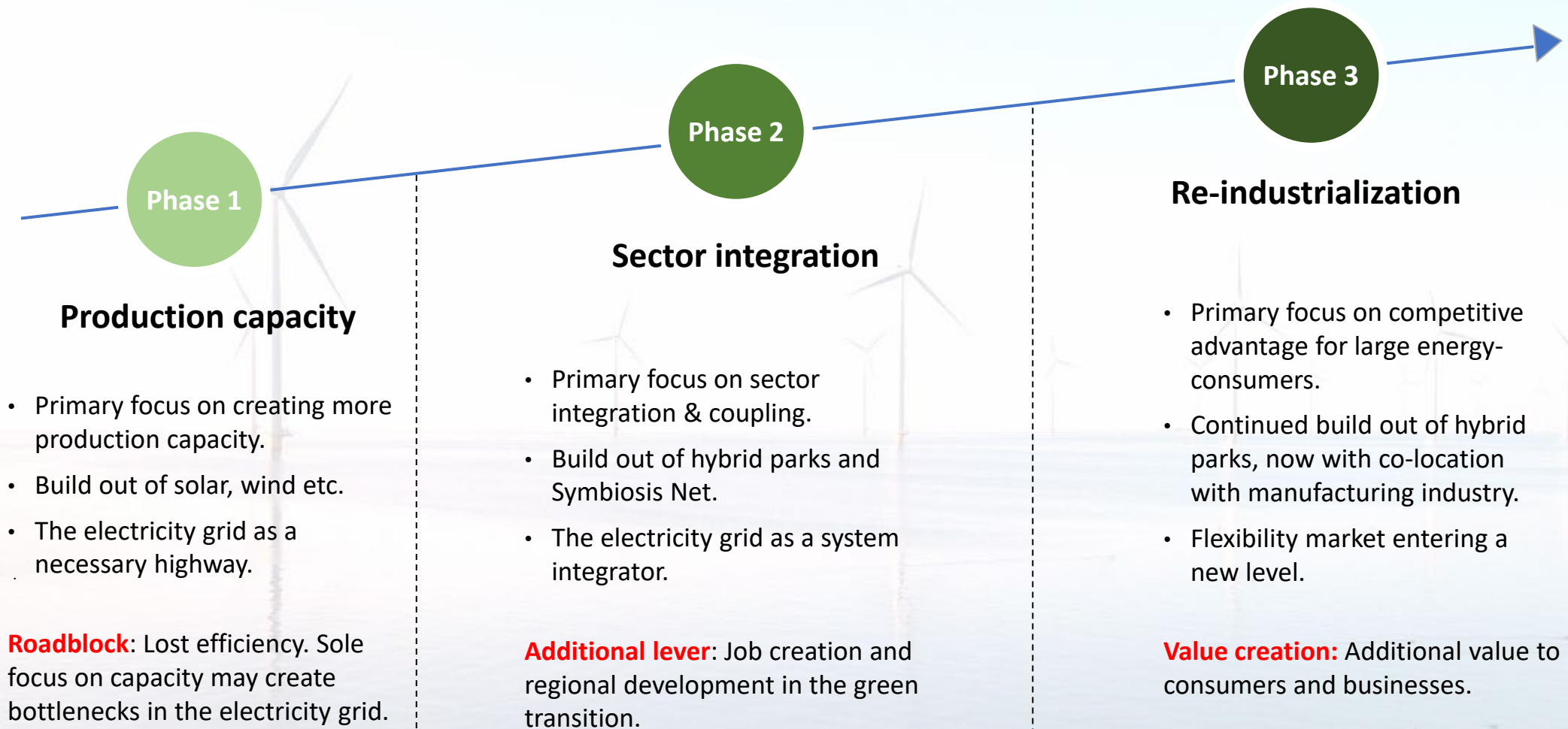
Norlys is strongly positioned in the green value chain



Green Lab



The Green Evolution



Visions - what to expect in 3rd phase



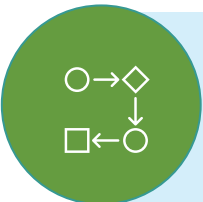
Flexibility market with energy cost at – or near - zero

We can offer cost-free green energy to large energy-consuming manufacturing companies moving closer to the production site.



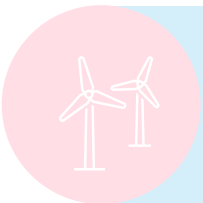
All land-based transportation is electrified

The electric fleet becomes a significant asset in the flexibility market.



Energy systems as catalyst for job creation

The energy system must create jobs and growth. GreenLab an example to be up-scaled.



Each data point more valuable than the kWh that comes out of it

Those who can utilize data will gain an important position in the value chain. Digitalization as a gamechanger.

Re-industrialization

Thank you

Niels Duedahl

CEO, Norlys a.m.b.a.

niels@norlys.dk

+45 2922 8508